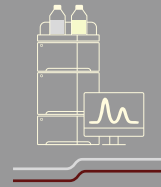




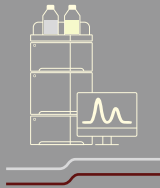
ANALYTICAL SCIENCE

density
PHARMACHEM

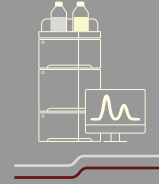


density
PHARMACHEM

density
PHARMACHEM

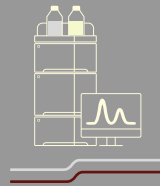
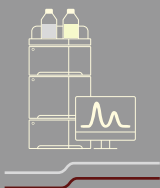


density
PHARMACHEM



density
PHARMACHEM

density
PHARMACHEM



density
PHARMACHEM



density
PHARMACHEM

CHROMATOGRAPHY SYSTEMS



BIKAI 1511 HPLC System



- **Reliable performance:** Delivers precise and durable performance, ensuring high uptime and exceptional return on investment (ROI)
- **Operating pressure:** Withstands up to 10,500 PSI (720 Bar) for enhanced separation efficiency
- **Pressure pulsation suppression:** Eliminates the need for dampers, keeping pulsation below 10 PSI
- **Versatile solvent mixing:** Supports multiple solvent mixing modes for flexibility in analysis



Quaternary Pump Model: P40

Specification	P40 Quaternary Gradient Pump Module
Gradient Model	Quaternary gradient (700 bar)
Online Degassing	4-channel(480uL/channel)
Optional Online Degassing	Optional 1-channel(480uL/channel)
Max.Pressure	10,500 PSI 72MPa (@0-2mL/min) 6,000 PSI 41MPa (@2-5mL/min) 3,000 PSI 21MPa (@5-10mL/min)
Flow Rate Range	0.001 mL/min - 10.000 mL/min (increment 0.001mL/min)
Flow Rate Accuracy	±0.5% (@1mL/min, Water)
Flow Rate Precision	≤0.1% (@1mL/min, Water) (JJG) ≤0.06% RSD (@1mL/min, Water) (ASTM)
Pressure Pulsation	≤1% (@1mL/min, Water, >10Mpa)
Gradient Accuracy	±0.5%
Gradient Precision	≤0.2% SD
Online Wash	Standard
Weight	20Kg
Size	550 mm(D)× 400 mm(W)× 180 mm(H)
Power	100 VAC - 240 VAC? 50/60 Hz, 150 Wmax
Operating Principle	Series double plunger reciprocating pump
Compressibility Compensation	yes
Number of Solvent Lines	4
Biocompatible (pH)	1.0~12.5(Subject to column range)
Environmental Conditions	For best measurement performance, operate in an environment where the temperature ranges from 15 ° C to 35 ° C with a change of less than 2 ° C/hour and the relative humidity ranges from 20% to 80%.



Auto sampler Model: 10C

Auto sampler	A10C
Product	Sub Ambient Auto sampler
Sampling mode	Suction type (Full loop, Partial Loop & μL pick-up)
Volume of Sample loop	Standard 100 μL ; Optional: 20 μL /50 μL
Temperature	Settable from 4°C to Ambient temp
Max. Sampling volume	Full loop= Loop volume; Partial Loop=1/2 loop volume; μL pick-up=(Loop volume-3*Needle volume)/2
Sample volume	2*54 1.5ml vials 108 (Standard), optional:96*2 well plate
Dosing pump volume	Standard 500 μL
Sampling Repeatability	Full loop \leq 0.3% RSD; Partial Loop \leq 0.3% RSD (\geq 5?L) & \leq 0.5% RSD (\geq 2?L); μL pick-up \leq 1.0% RSD
Cross Contamination	<0.0025% (Fixed method and condition)
Pressure limit	9000 PSI
High pressure distribution valve	Standard 1 set, optional 2 sets for realizing SPE function
Cooling function	Optional
Interface	RS232; LAN
Weight	22 KG Cooling:27kg?
Size	550mm(D) \times 400 mm(W) \times 280 mm(H)
Power	100 VAC - 240 VAC, 50/60 Hz, 75 Wmax. (Cooling: 200Wmax)
Injection cycle time	Sampling time: 10S-30S; Cleaning time: 40S-90S
Injection linearity	9999
Environmental Conditions	For best measurement performance, operate in an environment where the temperature ranges from 15 ° C to 35 ° C with a change of less than 2 ° C/hour and the relative humidity ranges from 20% to 80%.



Diode Array Detector Model: D20

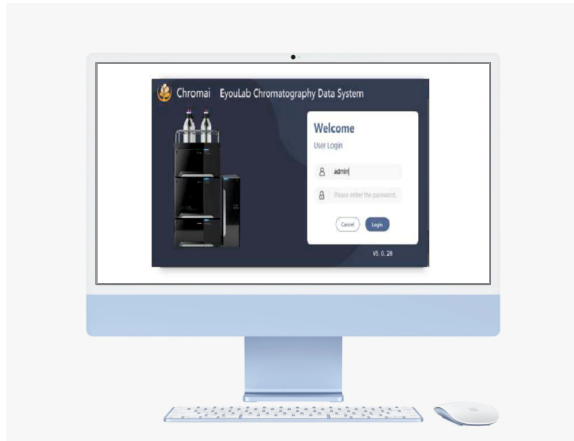
Diode Array Detector	D20
Wavelength	190 nm - 640 nm
Light Source	Deuterium lamp
Diode	1024 Pixels, 0.6nm/pixel
Spectral Width	6 nm
Wavelength Accuracy	±1 nm
Wavelength Precision	±0.1 nm
Noise	±1.0×10 ⁻⁵ AU (JJG) 0.75×10 ⁻⁵ AU (ASTM)
Drift	<0.5×10 ⁻³ AU/Hr
Linear Range	>2.0AU (ASTM)
Max.Sampling Rate	100 Hz
Minimal Testing concentration	2×10 ⁻⁸ g/mL
Channel	12 CHS, full spectrum scan
Flowcell	Volume :12 μL, Ss316, Light Path:10 mm, Max.pressure1200 PSI
Detection Limit	5×10 ⁻⁹ g/mL(naphthalene)
Weight	11 Kg
Size	550 mm(D)× 400 mm(W)× 180 mm(H)
Power	100 VAC - 240 VAC, 50/60 Hz, 90 Wmax
Wavelength calibration	±1 nm
Wavelength validation	±0.1 nm
Number of signal channels	12
Environmental Conditions	For best measurement performance, operate in an environment where the temperature ranges from 15 ° C to 35 ° C with a change of less than 2 ° C/hour and the relative humidity ranges from 20% to 80%.



Column Oven Model: C10

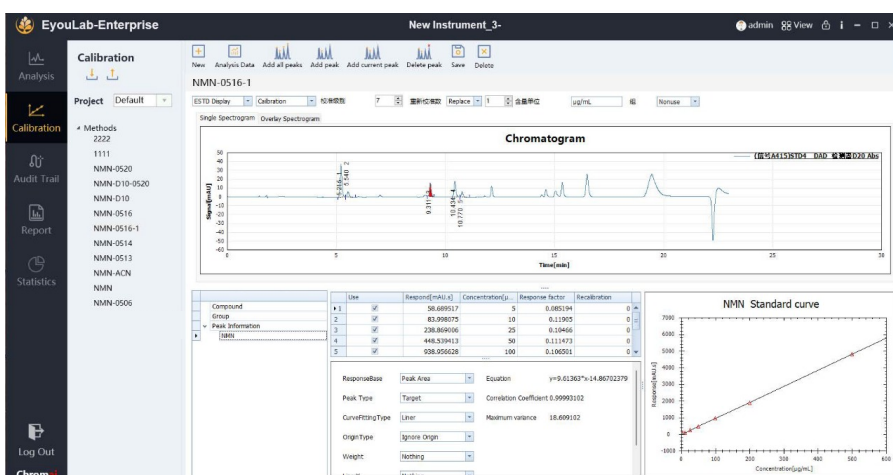
Column oven	C10
Product	Standard Heating function
Temp. control mode	Air circulation
Temp. Range	Ambient +5°C - 85°C
Temp Accuracy	±1.0 ?
Temp stability	±0.1 ?
Column capacity	Max. 4 * 300mm column
Column switch	Optional 2 sets for SPE or Muti-D Chromatography
Weight	15 Kg
Size	550 mm(D)× 150 mm(W)× 480 mm(H)
Power	100 VAC - 240 VAC, 50/60 Hz, 200 W max

Chromatography Data System EyouLab



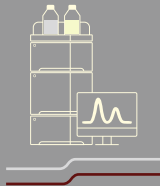
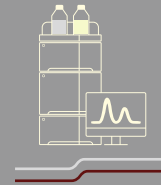
Eyoulab is the companion instrument control and data processing software of Chromai Voyager series liquid chromatography analyzers, which provides method development, instrument control, data acquisition and processing, and advanced reporting functions. As well as fully traceable management capabilities and good scalability.

- FDA 21 CFR Part 11/GMP/GLP compliant
- Frequently used functions are integrated in a single window, purifying the user's desktop environment and simplifying complexity
- The graphical monitoring interface can grasp the status of the equipment at any time, which is simple and easy to use
- Powerful data processing functions, providing a variety of integration functions and calculation methods
- Advanced automatic peak width, automatic threshold algorithm, adaptive data collection, automatic adjustment algorithm to achieve the best integration effect
- Equipped with System Suitability Test (SST) module with built-in common pharmacopoeias
- Powerful and complete user management functions to control the access rights of different logins to devices in various situations
- Support networked office, resource sharing, and overall work efficiency (database version support)
- Advanced design concept, with an eye to the future, provides good scalability



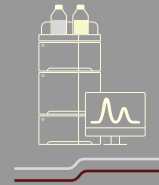
density
PHARMACHEM

density
PHARMACHEM



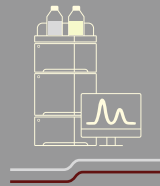
density
PHARMACHEM

density
PHARMACHEM



density
PHARMACHEM

density
PHARMACHEM







density
PHARMACHEM





density
PHARMACHEM

Density Pharmachem Private Limited

-  Sy. No. 615/A & 624/2/1, Pudur Village
Medchal-Malkajgiri District
Hyderabad - 501 401, Telangana, India
-  +91 99897 77910
-  jagadish@densitypharmachem.com
-  www.densitypharmachem.com

BIKAI Science & Technology Co., Ltd

-  Akhihabara Building 2F
1-11, Kanda and Izumimachi, Chiyoda-ku
Tokyo, Japan
-  +81-3-5823-4373